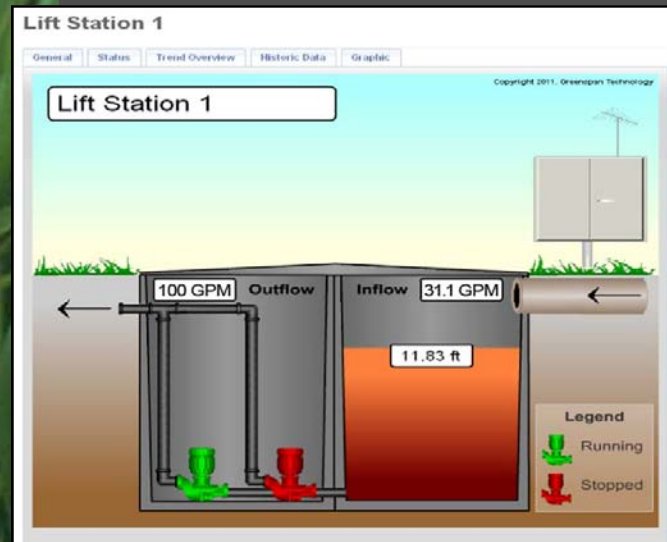


APPLICATIONS:

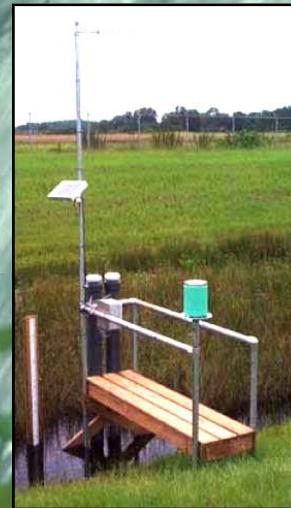
- Aquifer level
- Surface waters
- Lift stations
- Wastewater collection systems
- Sewer overflow reporting
- Water towers
- Pretreatment and/or neighboring community flow billing
- Distribution system water loss
- Storm water sampling
- Water quality stations
- Source water protection
- Cameras for security and sensor validation
- Stream gauging

SCREENSHOT



Real Time ENVIRONMENTAL DATA

Online Solutions For Monitoring Water Quality



CCLYNCH
& ASSOCIATES

CCLYNCH
& ASSOCIATES

OFFERING MULTIPLE OPTIONS:

1. Third Party hosted system that allows users remote access to multiple monitoring systems via the internet
2. Web hosted system installed on the end users server
3. Site hosted system in which the data logger in the field hosts the data and notifies users directly with alarms and status conditions

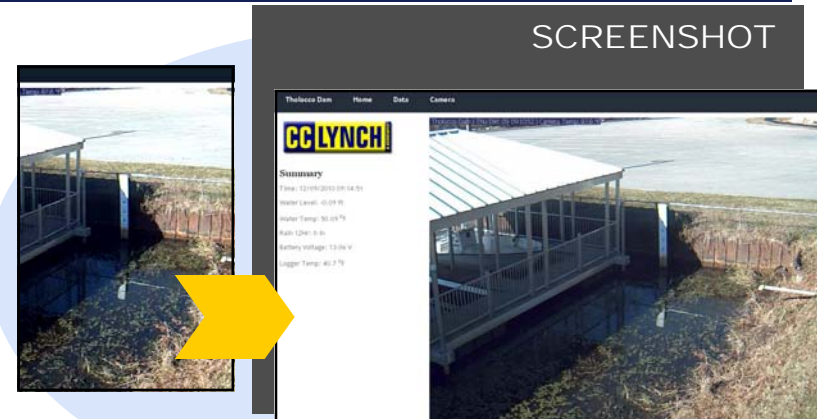
Since the analogue bag phone of the 80's C.C. Lynch & Associates has integrated remote near real time environmental data with cellular and radio telemetry solutions. Most web hosted offerings are proprietary hosted solutions that will never allow the transition of the data to the end users servers.

Our approach of using commercial off the shelf sensors and data loggers that support the use of commercial non-proprietary communications protocols to access and view your data is a better long term solution. With the ability to download and disseminate data from multiple commercial off the shelf sensors, loggers and PLC's.



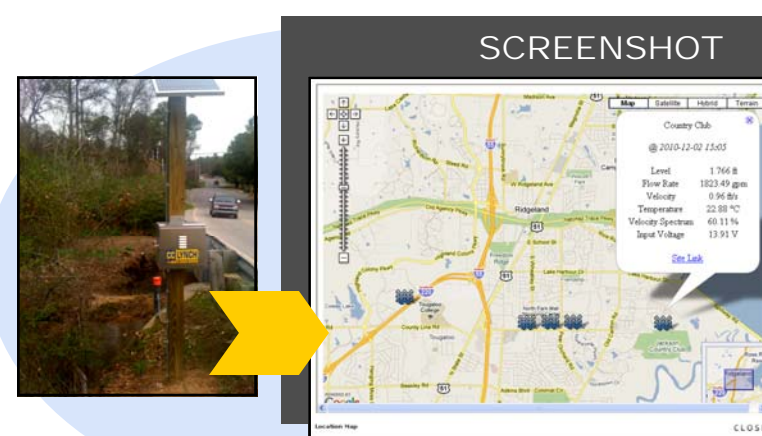
The C.C. Lynch & Associates On-Line Monitoring System

SITE HOSTED SYSTEM



The site picture above has real time camera for sensor validation and security.

SECURE OFFSITE WEB HOSTING



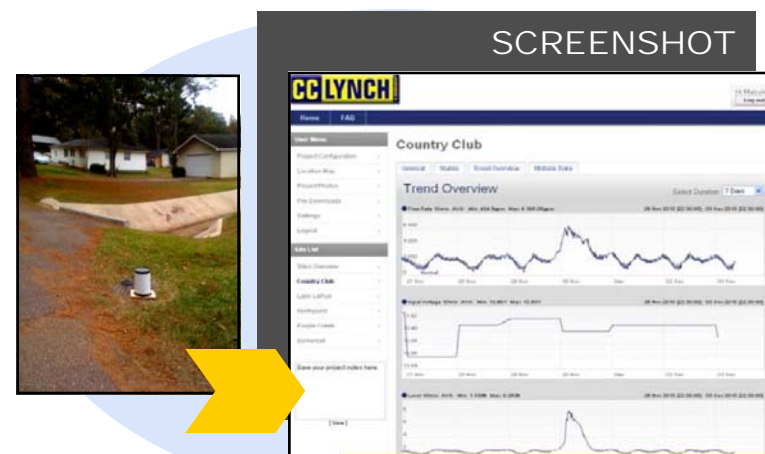
Web based environmental data collection and presentation service. Secure off site web hosted data is available via any web interface. Viewed in Google Maps

SMS & EMAIL ALERT STATUS



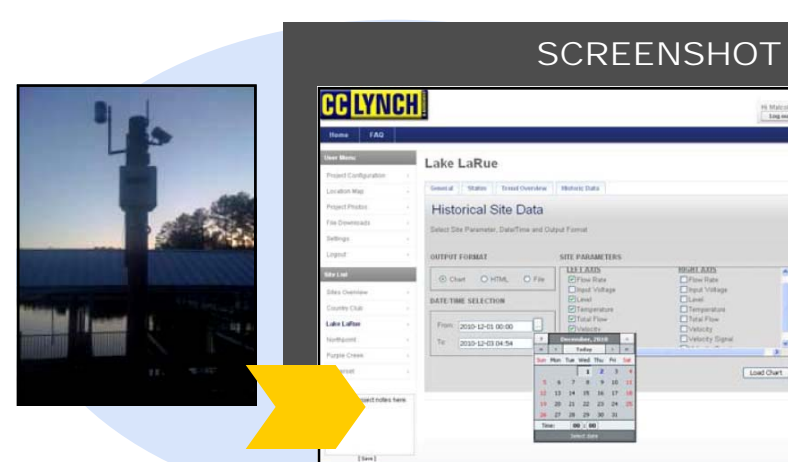
SMS and email alarm status reporting. With admin login you can access and program in the alarms for alarming up to 4 different groups of site conditions.

QUICK GRAPHS



Meter in picture sending rainfall, level velocity and flow to the web from inside the manhole.

EXPORT DATA



Click on the Historic Data Tab to download data as a chart, HTML or csv file format..

SITES OVERVIEW



Sites overview page allows you to view your data from all sites on one page. Meter in picture sending rainfall, level velocity and flow to the web from inside the manhole.